



HAWK HEADLINES

December 1, 2023

Principal's Message

Dear Hutton Families,

I'm thrilled to share an update about Teddy, our beloved school therapy dog, who has been doing an incredible job in providing comfort and support to our students. Teddy's presence has brought smiles, reduced stress, and created a warm, welcoming atmosphere in our school. It's heartwarming to witness the positive impact he has on our students' wellbeing, helping them feel more relaxed and engaged during the school day.



In another exciting development, I'd like to highlight the importance of regular attendance and celebrate our current attendance rates. Attendance is crucial as it directly impacts our students' learning and success. We're proud to report impressive attendance percentages across all grade levels:

- Kindergarten: 94.6%
- 1st Grade: 95.4%
- 2nd Grade: 95.2%
- 3rd Grade: 96.5%
- 4th Grade: 92.8%
- 5th Grade: 95.9%

These numbers reflect your commitment as families to prioritize education and ensure your children are present and ready to learn every day. Let's continue this fantastic trend, as every day in school is an opportunity for growth and learning for our students.

Thank you for your support in making Hutton Elementary a

Upcoming Events

**December 5, 7,
12, 14, 19 & 21**
Art-Enjoy the
Process

December 4-9
Missoula
Children's Theater
Rehearsals

December 9
MCT Performance
3:00 and 5:30
MPR

December 11
Yearbook Cover
Contest Deadline

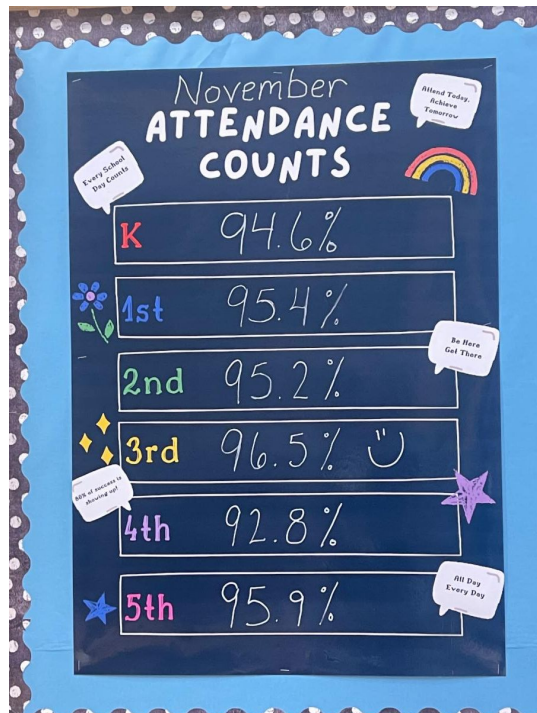
December 12
Hearing and
Vision Screening
Grades K, 1, 2, 3,
& 5

**December 25-
January 5**
Winter Break

nurturing and productive environment for our children.

Sincerely,

LaTonya Simmons
Principal



Land Acknowledgement: We acknowledge that we are on the unceded lands of the Spokane Tribe. The Spokane people shared this place with other tribes through their relations, resources, history, trade, and ceremony. We thank the caretakers of this land, who lived, and continue to live here Since Time Immemorial. This land holds the knowledge, culture, and spirit of "The People of the River."



Our Amazing Students

Citizen of the Month

Congratulations to the following students for earning Citizen of the Month for November! They exemplified **GRATITUDE** in their classrooms.

Kindergarten

Hazel Cook
Camden Cordes
Aria Eiselein
Charlotte Fink
Theodore Grambo
Felicity Madden
Kendall Quaintance
Jack Zoesch

K/1

Jo Derrick

First Grade

Charlie Branciforte
Harvey Lyman
Kyrin Miller
Margaret Poosri
Darby Quinn
Charlotte Van Cleave

Second Grade

Kelvin Cheeney
Knox Cohen
Marley Dudek
Grayson Harrington
Millie Hershey
Colton Jeffreys
Lilly Killian
Asa Marsteller
Tiberius Phillips
Soren Swigart

Third Grade

Tennessee Armstrong
Ellie Benc
Zion Bertholf
Lila Branciforte
Jude Gregory
Oliver Halloran
Jack Lyman
Ben McElmurray

Newcomer Center

Hay Blu Htoo

Fourth Grade

Miles Barker
Quentin Dickson
Phinny Halloran
Joe Henrich
Emerson Poosri
Jennifer Rodriguez

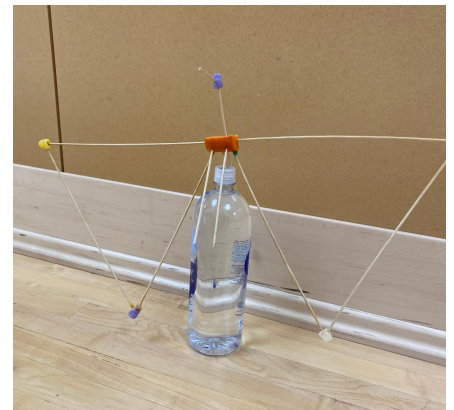
Fifth Grade

Nabil Achour
Ruby Bruzas
Jonaven DeMaderios
Zoe Marquette
Cade Olson
Erin Rowand

School Lunch



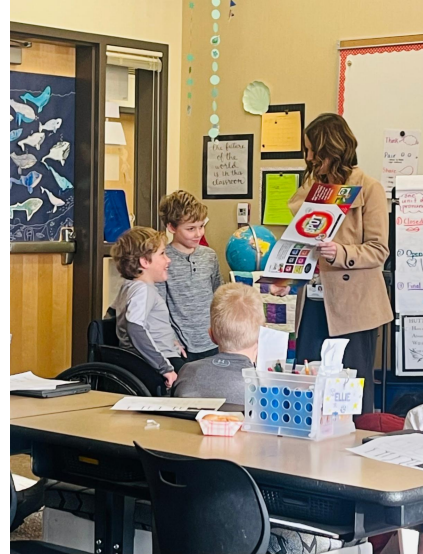
4th Grade Scientists used their Kinetic Energy skills to create different structures out of random materials. These structures had to balance on a water bottle cap. Karissa, Emma, Maddie and Kyrin created a balancing Hutton Hawk. Great job, 4th graders!



Students in Ms. Iverson's class worked together with partners to create posters with rhyming words.

Counselor's Corner

Shout out to Mrs. Snider teaching a lesson on emotions in Mrs. Schulte's class. Students were learning how to recognize emotions in others by noticing facial expressions, body language or in a certain situation.



From Mrs. Snider

Want to be "in the know" about the happenings at Hutton? check out my Counselor's Corner. I will have all the *things* about SEL, what is happening in the classroom with my lessons, school-wide activities, ideas for home and more.

**Mrs. Snider's Counseling
Corner**

Important School Information

Hutton PBIS - Together We Can!

Upcoming Hutton Friday Spirit Days

December 8: Hutton Gear/Nest Colors

December 15: Nest Colors

December 22: Winter PJ Day!

January 12: Positive Messages - MLK Assembly

Hutton Nest System

Red-Tailed Hawk

Nickname: "Tail Feathers"

Tail Feathers Classrooms:
Malm, Schulte, Heaton,
Hallett, Campbell, Duchesne



Sharp Shinned Hawk

Nick Name: "Sharpies"

Sharpies Classrooms:
Iverson, Gurash, Lipsker,
Yahne, Griffus, Crawford



Swainson's Hawk

Nick Name: "Swains"

Swain Classrooms:
Swim, Muelheims, Pedersen,
Freel, Day, Nye



Rough-Legged Hawk

Nick Name: "Leggies"

Leggies Classrooms
McCarthy, Fernandez, Dhaenens,
Griffith, Scribner, Paine

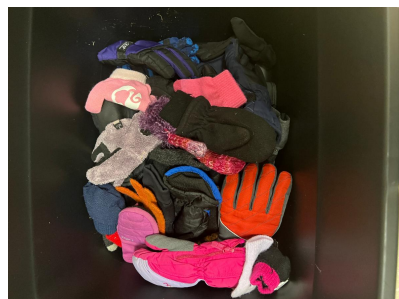


When we have "Wear Your Nest Color Hutton Friday Spirit Day", students wear the color of their nest.

Hutton Hawks Soar Together

IMPORTANT INFORMATION

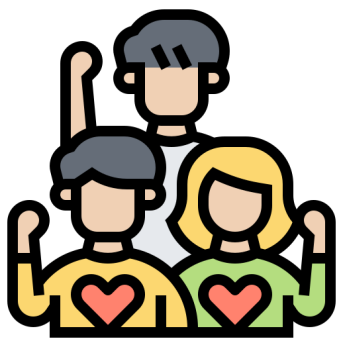
Parents, please remember that we are a **Single Point of Entry**. **ALL visitors need to report to the office** to enter the school building. **Please do not enter the school with your child for breakfast through the MPR doors on the black top.**



Lost and Found

Is your child missing their jacket, hat, gloves or water bottle? Our Lost and Found is overflowing! If you are missing an item, please come and check to see if our closet has your item. **Please come claim your child's item! Items left will be taken for donation during Thanksgiving Break.**

Please be aware of the daily forecast and remember to send your child to school with the appropriate clothing.



Volunteering at Hutton

Parents, if you would like to help out for field trips or in the classroom, all volunteers must have **DISTRICT CLEARANCE**. Please [click here for an application](#). The process for clearance takes about 1.5 weeks so please plan accordingly. If you have been cleared in previous years, please disregard. Thank you!

From the Nurse

As cold and flu season is upon us, please consider these health guidelines before you send your child to school.

[When to Keep Your Student Home From School](#)



**Hearing and Vision Health Screening is
Tuesday, December 12th for grades K, 1, 2, 3 and
5.**



Earning Money for Hutton is Easy!

How to Earn

[Box Tops for Education](#)

READY TO START EARNING FOR HUTTON? [GET THE BOX TOPS APP TODAY!](#)

It's as easy as scanning your receipts!

The PTG Scoop



HUTTON YEARBOOK COVER

CONTEST

FOLLOW THE STEPS BELOW

1

DRAW

Sketch a picture that represents the spirit of Hutton on the coloring page.

2

COLOR

Color your picture neatly. Include the theme on your artwork.

3

SUBMIT

Turn in your completed work with your name to the office.



THEME: "TOGETHER WE SOAR"



THE CHOSEN COVER WILL BE ANNOUNCED IN OUR HAWK HEADLINES

DUE MONDAY, DECEMBER 11

Please use this [form](#) to design your entry for the contest. Entries must be received in the school office by the end of the school day on **Monday, December 11th**.



After School Arts is coming in February! We will offer a variety of classes this year. If you have an interest in teaching or questions, please contact Huttonptgafterschoolarts@gmail.com.

BOOK DRIVE!

In January, the Hutton PTG will host a book drive for gently used children's books. If you are cleaning out in holiday preparation, please save your books for our book drive in January. **The books will be given to Hutton students at our Books and Bingo event on**





Chess Club

This year, **Chess Club is running Jan 10-Feb 28**, Wednesdays, from 3-4pm and is open to grades 1-5. It is a fun way for your child to learn chess and a great indoor activity for winter. The program cost is \$90 and the PTG offers scholarships. There is an activity bus available for transportation home if needed. **Registration is open** and closes December 22. [Click here to register](#).

Hutton PTG Website

Hutton PTG on
Facebook

Hutton PTG on
Instagram

Hutton PTG Meeting
Zoom Link

Email for more information at huttonptg@gmail.com.

District News



HEART Gift Card Drive

Every winter, SPS holds a gift card drive to support unaccompanied youth in our [Homeless Education and Resource Team](#) (HEART) program. HEART supports SPS students who lack a fixed, regular, and adequate nighttime residence.

This year's drive is Nov. 15 - Dec. 11. Here's how you can support:

- Drop off or mail gift cards to the SPS administration building (200 N. Bernard St., Spokane WA, 99201, c/o Communications Dept)
- Drop off gift cards to any of our 57 school building offices
- Donate to the HEART Trust online at spokaneschools.org/supportHEART

SPOKANE PUBLIC SCHOOLS CALENDAR 2023-24

AUGUST

| MON | TUE | WED | THUR | FRI |
|-----|-----|-----|------|-----|
| | 1 | 2 | 3 | 4 |
| 7 | 8 | 9 | 10 | 11 |
| 14 | 15 | 16 | 17 | 18 |
| 21 | 22 | 23 | 24 | 25 |
| ♦28 | ♦29 | ♦30 | 31 | |

SEPTEMBER

| MON | TUE | WED | THUR | FRI |
|-----|-----|-----|------|-----|
| | | | | 1 |
| 4 | 5 | 6 | 7 | 8 |
| 11 | 12 | 13 | 14 | 15 |
| 18 | 19 | 20 | 21 | 22 |
| 25 | 26 | 27 | 28 | 29 |

OCTOBER

| MON | TUE | WED | THUR | FRI |
|-----|-----|-----|------|-----|
| 2 | 3 | 4 | 5 | 6 |
| 9 | 10 | 11 | 12 | ♦13 |
| 16 | 17 | 18 | 19 | 20 |
| 23 | 24 | 25 | 26 | 27 |
| 30 | 31 | | | |

NOVEMBER

| MON | TUE | WED | THUR | FRI |
|-----|-----|-----|------|-----|
| | | 1 | 2 | 3 |
| 6 | 7 | 8 | 9 | 10 |
| 13 | 14 | 15 | 16 | 17 |
| 20 | 21 | 22 | 23 | 24 |
| 27 | 28 | 29 | 30 | |

DECEMBER

| MON | TUE | WED | THUR | FRI |
|-----|-----|-----|------|-----|
| | | | | 1 |
| 4 | 5 | 6 | 7 | 8 |
| 11 | 12 | 13 | 14 | 15 |
| 18 | 19 | 20 | 21 | 22 |
| 25 | 26 | 27 | 28 | 29 |

JANUARY

| MON | TUE | WED | THUR | FRI |
|-----|-----|-----|------|-----|
| 1 | 2 | 3 | 4 | 5 |
| 8 | 9 | 10 | 11 | 12 |
| 15 | 16 | 17 | 18 | 19 |
| 22 | 23 | 24 | 25 | 26 |
| 29 | 30 | 31 | | |

SIGNIFICANT DATES

August 28 - 30..... Teacher Work Day / Prof. Learn. Imp. Day
 August 31 - September 1 K-12 Launch Conferences
 September 4 Labor Day
 September 5 First Day of Classes (1st through 12th)
 September 6 First Day of Kindergarten (A/B Rotation)
 September 12..... First Day of All Kindergarten Together
 September 25 First Day for School Day Preschool (PK)
 September 26 First Day for AM/PM & CIP PK
 October 13..... Prof. Learn. Imp. Day / Non Student Day
 November 10 Veterans Day
 November 22-24 Thanksgiving Break
 December 25 - January 5 Winter Break
 January 15 MLK Day
 January 25-26 Elem. Progress Conf. / Elem. Non Student Day
 February 2 Semester Break-Day / Non Student Day
 February 19 President's Day
 February 20 Prof. Learn. Imp. Day / Non Student Day
 March 15 Weather Make Up Day / Non Student Day
 April 1-5 Spring Break
 May 27 Memorial Day
 June 7 Last Day for AM/PM & CIP PK
 June 11 Last Day for School Day PK
 June 14 Last Day of School
 June 17, 18 Weather Make Up Days (if needed)
 June 19 Juneteenth

Elementary Grading Periods

February 1 End of First Semester
 June 14 End of Second Semester

Elementary Reporting

First Grading Period

February 16 Report Cards

Second Grading Period

June 14 Report Cards

Secondary Grading Periods

November 7 End of First Quarter
 February 1 End of First Semester
 April 12 End of Third Quarter
 June 14 End of Second Semester

Secondary Reporting

November 15 First Quarter Report Cards
 February 9 First Semester Report Cards
 April 19 Third Quarter Report Cards
 June 17 Second Semester Report Cards

FEBRUARY

| MON | TUE | WED | THUR | FRI |
|-----|-----|-----|------|-----|
| | | | 1 | 2 |
| 5 | 6 | 7 | 8 | 9 |
| 12 | 13 | 14 | 15 | 16 |
| 19 | ♦20 | 21 | 22 | 23 |
| 26 | 27 | 28 | 29 | |

MARCH

| MON | TUE | WED | THUR | FRI |
|-----|-----|-----|------|-----|
| | | | | 1 |
| 4 | 5 | 6 | 7 | 8 |
| 11 | 12 | 13 | 14 | ★15 |
| 18 | 19 | 20 | 21 | 22 |
| 25 | 26 | 27 | 28 | 29 |

APRIL

| MON | TUE | WED | THUR | FRI |
|-----|-----|-----|------|-----|
| 1 | 2 | 3 | 4 | 5 |
| 8 | 9 | 10 | 11 | 12 |
| 15 | 16 | 17 | 18 | 19 |
| 22 | 23 | 24 | 25 | 26 |
| 29 | 30 | | | |

MAY

| MON | TUE | WED | THUR | FRI |
|-----|-----|-----|------|-----|
| | | 1 | 2 | 3 |
| 6 | 7 | 8 | 9 | 10 |
| 13 | 14 | 15 | 16 | 17 |
| 20 | 21 | 22 | 23 | 24 |
| 27 | 28 | 29 | 30 | 31 |

JUNE

| MON | TUE | WED | THUR | FRI |
|-----|-----|-----|------|-----|
| 3 | 4 | 5 | 6 | 7 |
| 10 | 11 | 12 | 13 | 14 |
| ★17 | ★18 | 19 | 20 | 21 |
| 24 | 25 | 26 | 27 | 28 |

LEGEND

- First/Last day of School
- Late Start/Collaboration
- Holiday
- No School/School Break Day
- Conferences
- ♦ Teacher Workday/Prof. Learn. Imp. Day
- ★ Weather/Emergency Makeup Day

2023-2024 SPS Calendar



Spokane Public Schools
excellence for everyone





Spokane County Fair and Expo Center | 404 N Havana, Spokane Valley, WA 99212

December 7-14, 2023

December 7, 8, 9, 12, and 14 | 10am-2pm

December 11 and 13 | 4pm-8pm

(Closed on Sunday, December 10th)

All families are welcome this Christmas at the Fairgrounds!

Required Documentation

The following documentation is required to receive assistance:

Children (17 yrs. and younger)

Bring Proof of:

Name

Date of Birth or Age

(Examples of acceptable documentation)

- Birth Certificate
- Insurance Card
- Letter from school, DSHS or daycare
- WA Apple Health Statement

Adults (18 yrs. and older)

Bring Proof of:

Photo ID (copies acceptable)

Proof of Physical Residence

(Examples of acceptable documentation)

- Bills
- Rental Agreement

**No Pre-Registration
Required!**



ChristmasBureauSpokane.org

**Follow us on Facebook
@christmasbureauspokane**

Disclaimer: This is not an activity of any school or school district. Distribution of this material and the use of district facilities does not constitute an endorsement or sponsorship of the event.

This is not an activity of the school or school district. Distribution of this material and the use of district facilities does not constitute an endorsement or sponsorship for the event/information by the school or the district.



Follow Hutton Elementary on Facebook and
checkout our website!

Hutton
Website

Thank you to our sponsors!
We appreciate you.



ROSAUERS
SUPERMARKETS, INC.



CARUSO'S
SANDWICHES & ARTISAN PIZZA
"DAILY FRESH"



latah bistro



SPS
Website

Spokane Public Schools | 200 N. Bernard, Spokane, WA 99201

[Unsubscribe kevind@spokaneschools.org](mailto:kevind@spokaneschools.org)

[Update Profile](#) | [Constant Contact Data Notice](#)

Sent by heatherah@spokaneschools.org powered by



Try email marketing for free today!